

### SAFE TRAK HD HEAVY DUTY ACCESS MATS

Designed as a short and long term access solution, whilst providing effective Ground Protection and reducing damages on site.

#### Specifications

<b>Size:</b>	2.4m [L] x 1.2m [W] x 15mm [D] Half size: 2.4m [L] x 0.6m [W] x 15mm [D]
<b>Weight:</b>	44Kg / 22Kg
<b>Load:</b>	Suggested 60 tonnes, weight tested up to 120 tonnes (depending on ground conditions)
<b>Material:</b>	100% Recycled High Density Polyethylene (HDPE)
<b>Features:</b>	<ul style="list-style-type: none"> <li>o High Profile Vehicular traction surface</li> <li>o Non-slip Pedestrian surface for optimal grip</li> <li>o 6 hand holes per full size mat</li> <li>o Hand holes also utilised as connection points</li> <li>o UV protected against sunlight/other weather conditions</li> <li>o Hard wearing and durable/extensive lifespan</li> <li>o Easy clean/wipe/jet washed</li> </ul>
<b>Preventative:</b>	Maximises support and mud suppression with minimal disturbance to protect the ground and grips diminish accidents
<b>Preparation:</b>	Minimal – Designed to be installed and easily laid on top of existing area/surface
<b>Ecosystem:</b>	Avoids property, heritage and environmental damage, plus reinstatement
<b>Storage:</b>	Compact, stack on top of each other or contain in stillage (ask for our options)
<b>Accessories:</b>	EuroTrak HD hand hold connector or steel u-pin connections available

A variety of Steel Fabricated Stillages are available



#### Delivery

We hold most stock, so whether you require same/next day or standard delivery, here are the options to receive products.



Same day\*



Next day\*



Standard 3 days

Typical enquiries handled within 1 hour from receiving your call.

\* Depending on stock availability when placing order

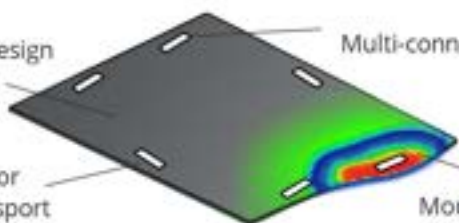
- Rigid tension
- Flexibility
- Fits surface

Non-slip design & material


Multi-connection points

Handles for easy transport

Moulds to surface



- Construction
- Civil Engineering
- Groundworkers
- Outdoor Events

 60 tonnes



 44/22Kg



#### Purpose

- ✓ Temporary Access & Ground Protection
- ✓ Prevent ground damage from weather
- ✓ Non-slip traction surface for access to pedestrians and vehicles
- ✓ Rigid, yet flexible to fit contours
- ✓ Effective Trackway option for vehicles or walkway solution for pedestrians

#### Additional Products

As an alternative option, please take a look at our DuraMatt Medium Duty Access Mats or Safe Site Matting or Steel Road Plates.

#### Contact Us



[www.hermeq.ie](http://www.hermeq.ie)



[sales@hermeq.com](mailto:sales@hermeq.com)

# Installation Guide

## Step 1 - Preparation

Before Safe Trak HD Access Mats are installed, it is recommended and where possible that the ground is graded and levelled before use. All large projections and objects must be removed.



## Step 2- Assembly

Ideally, a non-woven and needle punched filtration textile should be laid out prior to installation. This will prevent soil contaminating the top surface whilst still allowing water to drain away and will also help to prevent mud and dirt from coming up between the gaps of the mats.



## Step 3 - Laying

Safe Trak HD Access Mats should be lifted by two people and you must ensure correct manual handling procedures are followed at all times. The mats have hand holes at each side of the board to aid manual handling.

Drag hooks are available to help move boards into position to avoid heavy lifting.



## Step 4 - Connecting

Using two Safe Trak HD hand hole connectors per mat, tighten with standard bolts and oversized washers before using any plant or machinery on the system. Be aware not to over tighten the bolt to allow for room of movement and also expansion of the mats in hot weather conditions.



We recommend using either standard spanners, a wrench or a battery operated drill to tighten the bolts. We do not advise using air-drills as this can cause over-tightening of the bolts.

Please be sure not to over tighten bolts, as this can cause cross-threading and damage to the connectors. Additional reinforcement plates can be used for longer term or heavy weight projects.

## Need to Natter?

0121 725 2338

www.hermeq.ie

News, insights and events

Product reviews and offers, answered questions and discussion tips

Shared business and industry information

'How to' use our products, installations and vlogs



### Installation timings

2 people required. 6 strategically positioned hand holes to aid manual handling

Single line connection in 2 mins

Grid connection in less than 5 mins

230m<sup>2</sup> area in approx. 2 hours (depending on ground conditions and site layout)

When driving on the mats, do not exceed 5mph

## Safe Trak HD Heavy Duty Access Mats

These mats are compression moulded to ensure a standard size, give or take general manufacturing tolerances. Also as standard, this product has rounded corners and hand holes for safe handling to carry and install them, in conjunction with Safe Trak HD hand hole connectors.



### Additional Information

The final installation location of each mat should provide sufficient space for thermal movement. Typically, 10mm is recommended in the UK climate. Once in position, mats may be retained with proprietary fixing pieces.



[CLICK HERE TO PLAY VIDEO](#)

These mats may be used with custom fixings to construct highly durable and weather resistant temporary running surfaces over sensitive ground conditions and will exhibit the following benefits:

- Long life expectancy
- Maintenance free
- Highly resistant to impact and wear
- Non-toxic
- Non-leaching
- Unsupportive of organic growth
- Non-absorbent
- Will not rot
- Slip resistant
- Easily fixed

### Handling and Storage

Safe Trak HD Access Mats are delivered to site in pre-wrapped packs. The mats are packaged 30 units per pallet and banded with polyester strips. Pallets are incorporated into the packaging to aid the use of mechanical handling with apparatus such as fork-lifts and lifting booms with slings.


These mats should be stored in original packaging on a flat, solid and free draining storage area and we recommend the banding should not be removed when storing them, unless when safely positioned at ground level or until ready for use.

Gloves should be worn when handling these Safe Trak HD Access Mats.

## Need to Natter?

 0121 725 2338

 [www.hermeq.ie](http://www.hermeq.ie)

 News, insights and events

 Product reviews and offers, answered questions and discussion tips

 Shared business and industry information

 'How to' use our products, installations and vlogs

 **HERMEQ**  
In Ground, On Ground & Above Ground Equipment

When assessing ground conditions on site we advise seeking professional engineering guidance if there is any doubt. It is the users responsibility to assess the load-bearing capacity of the ground, and to only operate vehicles within the weight that the ground is capable of safely supporting. HERMEQ accepts no liability whatsoever from any damage, loss or injury arising from the installation and ground conditions on which these products are used.

**We advise not to use Steel Tracked vehicles with any composite mats unless pre-authorized and agreed beforehand, traversing and aggressive movement on the mats may cause damage to them and the connectors and this will be the sole responsibility of the customer and user of the mats.**

## Additional information

 [Product Guide](#)

 [HERMEQ Products Brochure](#)